

REBEL

YACHT INFORMATION




RASCAL
VOYAGES

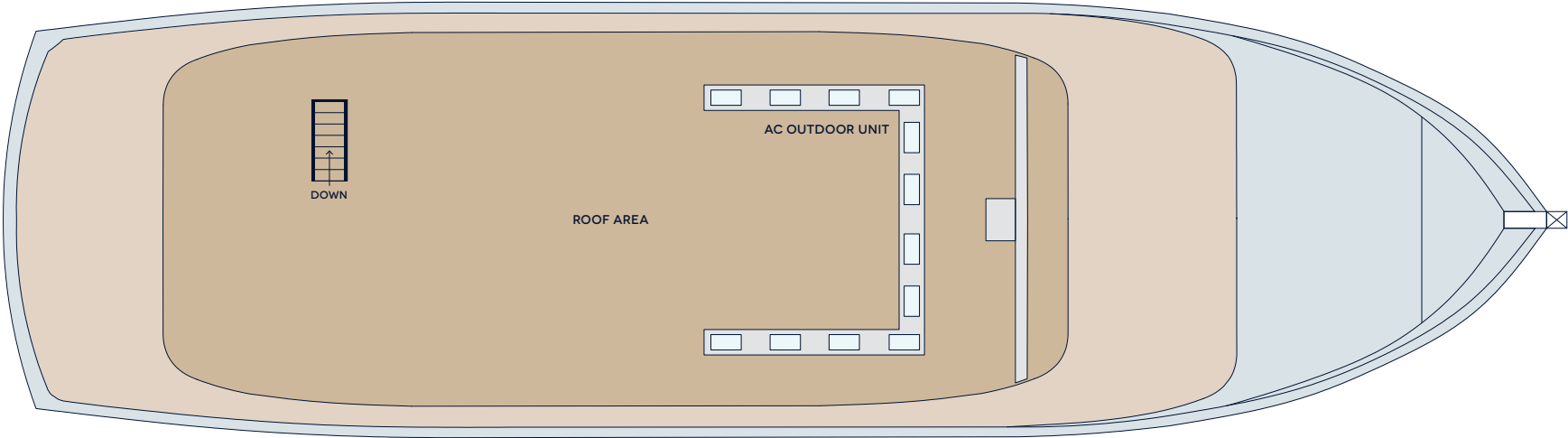
LAUNCH YOURSELF INTO AN OFF-THE-GRID ADVENTURE WITH NO COMPROMISE ON LUXURY

Rebel is a traditional handmade phinisi yacht built in 2020 in Sulawesi, Indonesia. Measuring 30m in length, she accommodates up to 10 guests across 5 cabins and 4 spacious common areas and includes a fine wine cellar and an outdoor cinema under the stars. Inspired by the rich local craft of Indonesia and featuring hand-woven fabrics and carvings, the interiors are a blend of modern laid-back luxe with a tribal vibe.

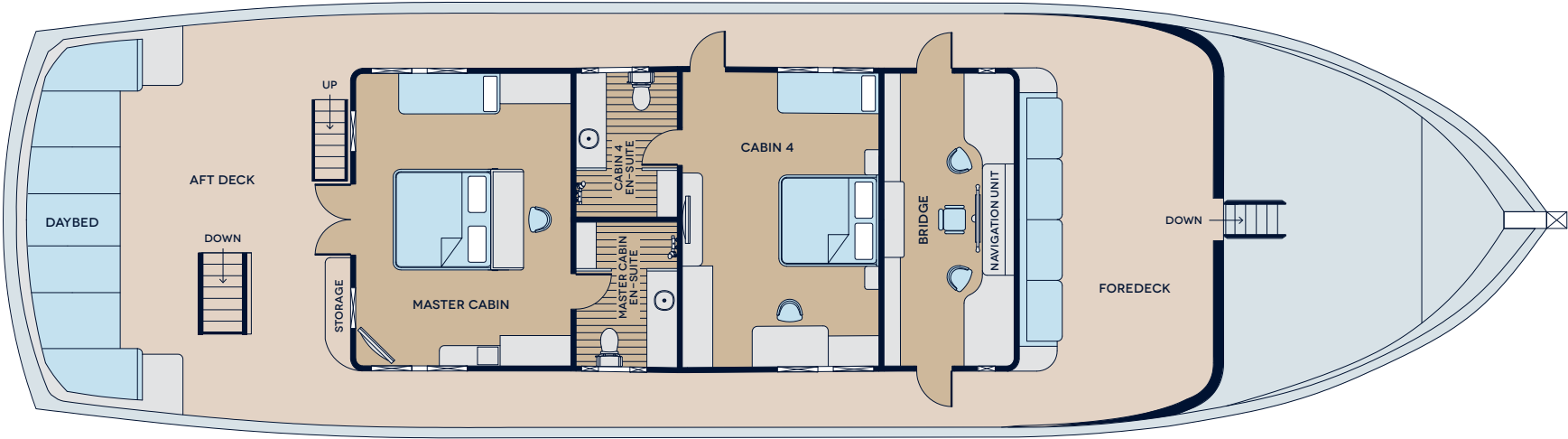




FLOOR PLANS



ROOF DECK

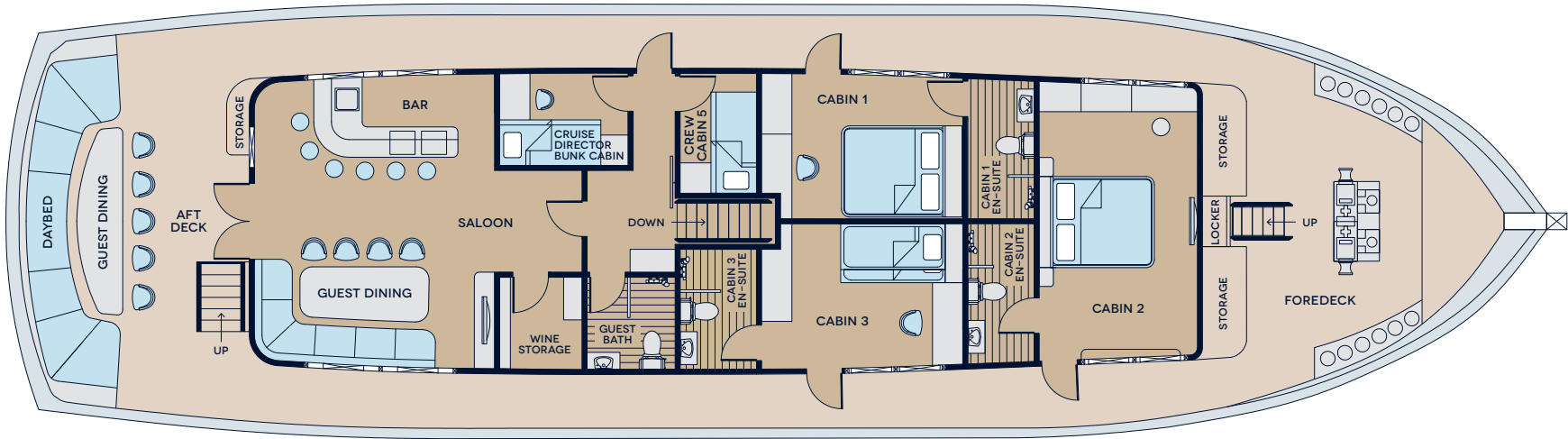


UPPER DECK

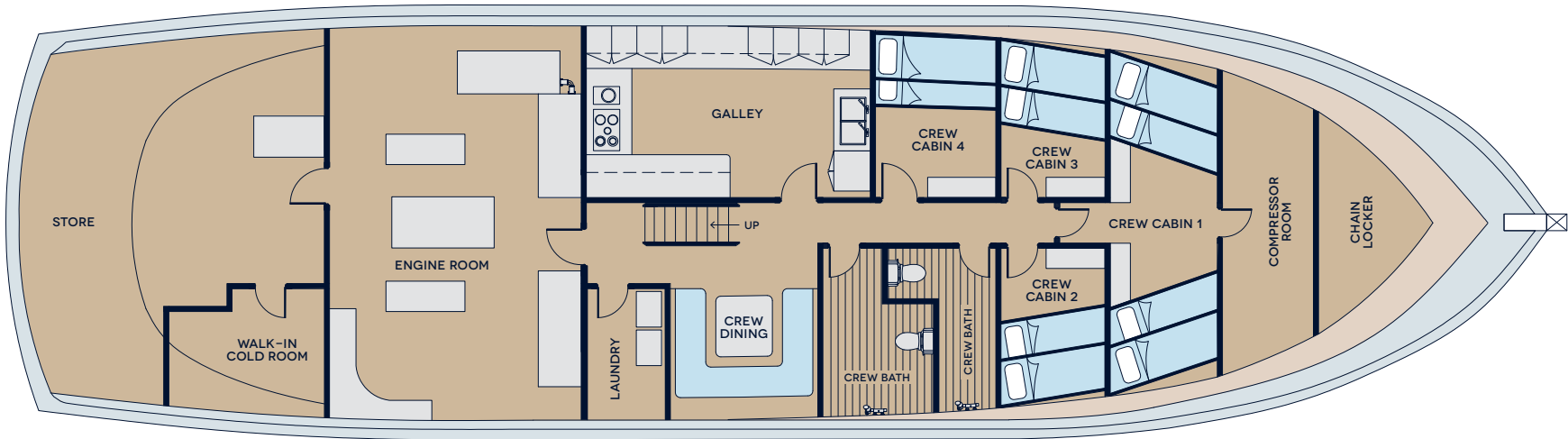




FLOOR PLANS



MAIN DECK



BELOW DECK



YACHT SPECIFICATIONS

- LOA: 30 Metres
- Draft: 3 Metres
- Width: 7.4 Metres
- Builders: Pak Haji Wahab/Raul Boscarino
- Built: 2020
- Hull Construction: Ironwood
- Two inflatable tenders
- 5 cabins with en-suite bathrooms
- Guest: 10
- Crew: 11
- Air Conditioning
- WiFi
- Wine Cellar

ON-DECK

- Four spacious deck areas
- Roof deck
- Cinema under the stars



EQUIPMENT

- Full scuba diving equipment and onboard PADI dive instructor
- Snorkelling equipment
- Sea kayaks x 4
- Stand up paddleboards x 3
- Inflatable towable mattress
- Wakeboard
- Spear guns x 2
- Movie library
- Board and card games
- Library
- Cinema under the stars



ACTIVITIES



ROOF DECK YOGA



MASSAGE



COOKING CLASS



SNORKELLING



KAYAKING



PADDLEBOARDING



**DIVING AND
CERTIFICATION**



**WILDLIFE
WATCHING**



**POP-UP
BEACH CLUB**



**POP-UP BEACH
RESTAURANT**



**NAVIGATION
CLASS WITH THE
CAPTAIN**



**VILLAGE
AND MARKET
TOURS**

Cooking class, massage, yoga and diving certification upon request.

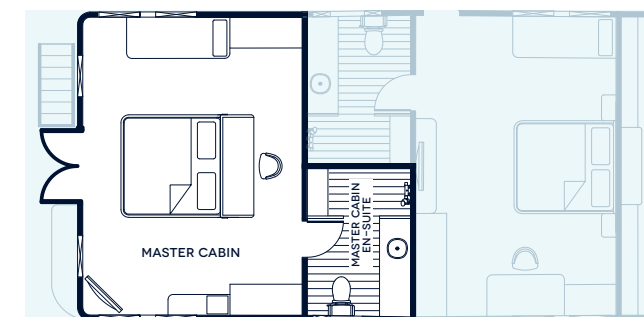




MASTER CABIN

UPPER DECK

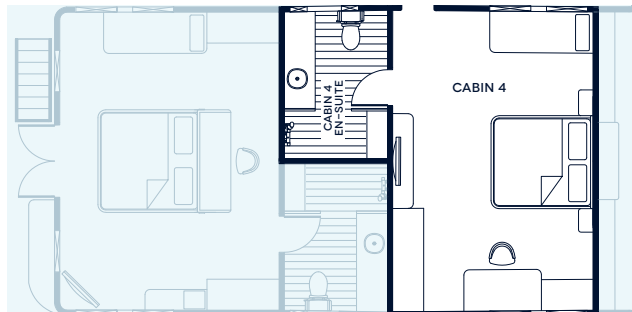
- Rebel's largest cabin
- King sized bed + additional daybed
- Wraparound windows
- En-suite bathroom
- Large Desk
- Air Conditioning
- WiFi
- Flat screen TV
- Minibar
- Cabin size: 5.8 x 4.3m
- Bed size: 200 x 200cm
- Ceiling height: 2.1m



CABIN 4

UPPER DECK

- King sized bed + additional daybed
- Large windows on both sides
- En-suite bathroom
- Air Conditioning
- WiFi
- Flat screen TV
- Minibar
- Cabin size: 3.9 x 5.8m
- Bed size: 200 x 200cm
- Ceiling height: 2.1m

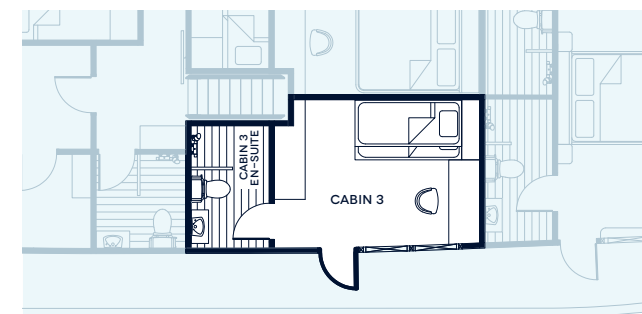




CABIN 3

MAIN DECK

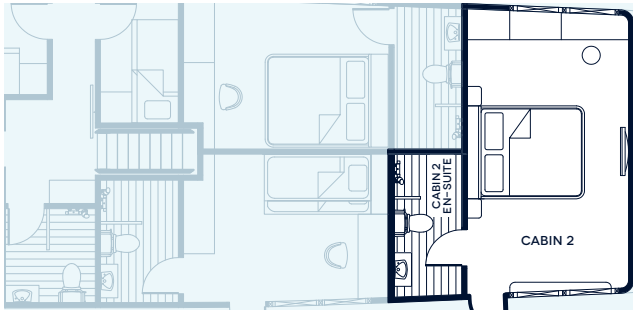
- Bunk bed with Double + King Single
- Large window
- En-suite bathroom
- Desk
- Air Conditioning
- WiFi
- Minibar
- Cabin size: 4 x 2.9m
- Lower bed size: 160 x 200cm
- Upper bed size: 100 x 200cm
- Ceiling height: 2.5m



CABIN 2

MAIN DECK

- Queen sized bed
- Large windows on both sides
- En-suite bathroom
- Air Conditioning
- WiFi
- Flat screen TV
- Minibar
- Cabin size: 5.4 x 3.2m
- Bed size: 180 x 200cm
- Ceiling height: 2.3m

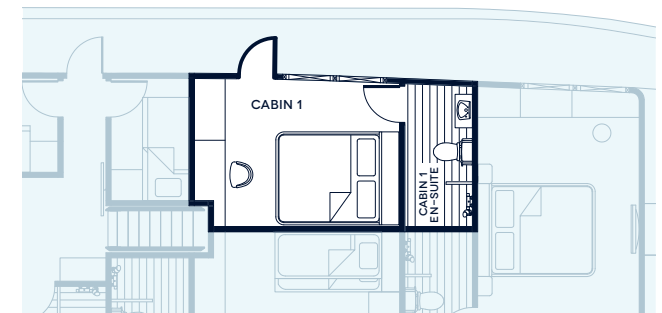




CABIN 1

MAIN DECK

- Queen sized bed
- Large windows
- En-suite bathroom
- Desk
- Air Conditioning
- WiFi
- Minibar
- Cabin size: 4 x 2.8m
- Bed size: 160 x 200cm
- Ceiling height: 2.5m



FOREDECK BY THE BRIDGE

Front row seats to spectacular views.



SALOON/LOUNGE

The lounge is the ideal place to kick back and relax with a drink or two.

MAIN DECK DINING AREA

- Sheltered al fresco deck
- Seats up to 10 people
- Panoramic views
- Surround sound music system



Wine Suggestions

Lunch:

Two Rivers 'clos Des
Pierres' Chardonnay

Canapé:

Vincent Cremen
De Bourgogne

Dinner:

Black Cottage
Pinot Noir



WINE CELLAR

A specially crafted wine cellar
stocking a wide selection of old
and new world wines.

ROOF DECK

An ideal spot for meditation, yoga, sunbathing or jumping off. Daily sunset canapés are also served here.





RASCALVOYAGES.COM

For more information contact Sharifah Khadijah, Head of Sales & Customer Delight at +65 8875 3122 or enquiries@rascalvoyages.com